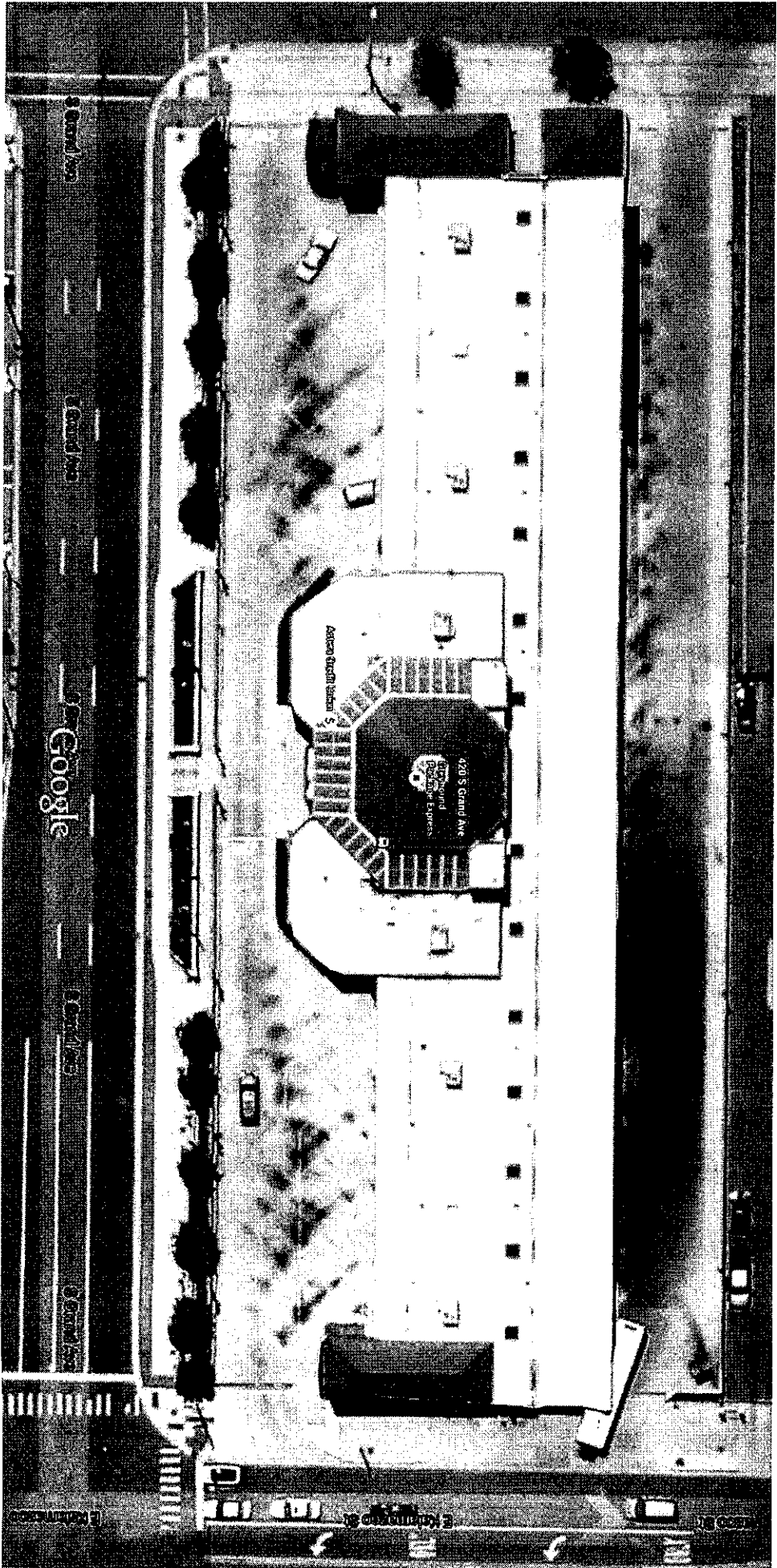
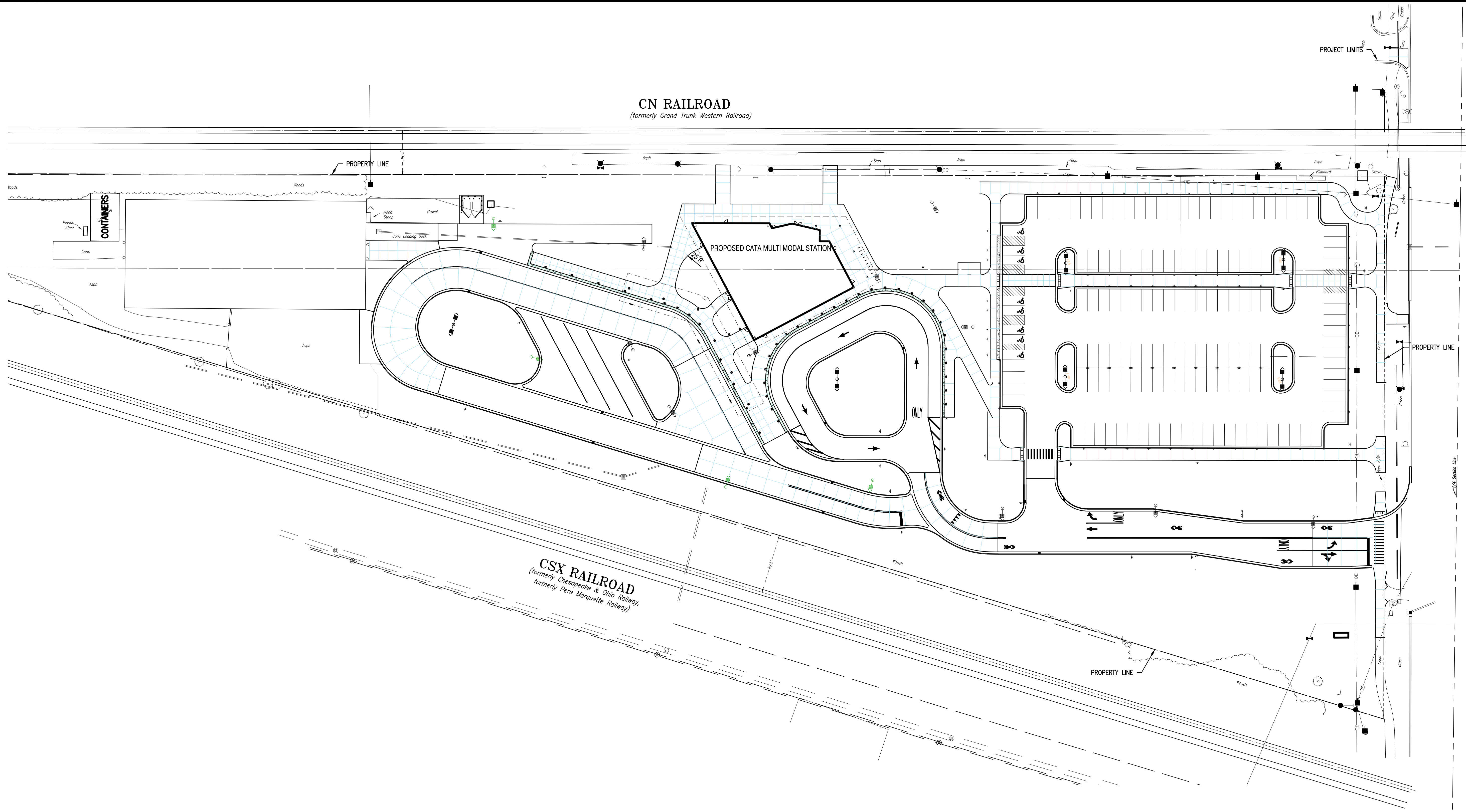


EXHIBIT F



420 S Grand Ave

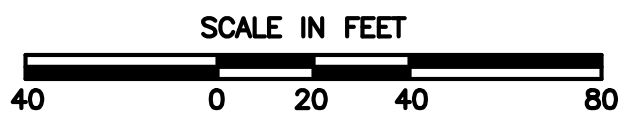


CN RAILROAD
(formerly Grand Trunk Western Railroad)

PROPOSED CATA MULTI MODAL STATION

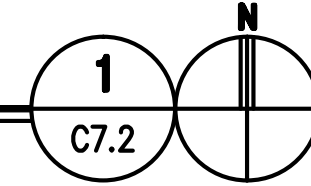
CSX RAILROAD
(formerly Chesapeake & Ohio Railway,
formerly Pere Marquette Railway)

HARRISON ROAD



SNOW STORAGE PLAN

SCALE: 1"=40'

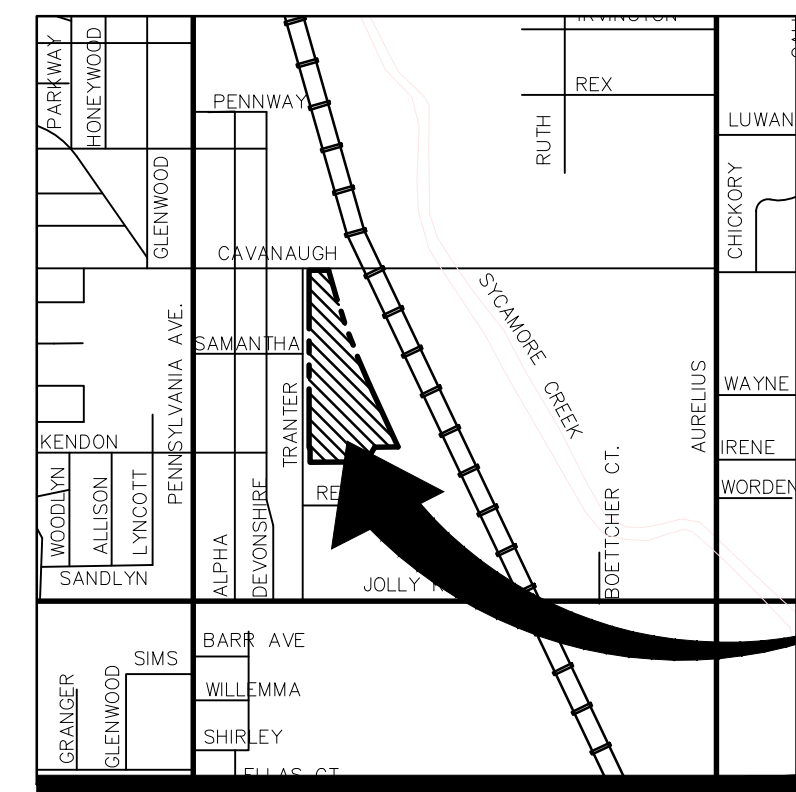


DRAWN: RMS	CHK'D: SGM
DESIGNED: RMS	
APPROVED: ETB	
DATE: APRIL 18, 2014	
PROJECT NUMBER	1341.6517.70

EAST LANSING MICHIGAN
CAPITAL AREA TRANSPORTATION AUTHORITY
CAPITAL AREA MULTIMODAL GATEWAY – OPERATED BY CATA

DRAWING NUMBER
C7.2
CIVIL

CIVIL
SNOW STORAGE PLAN

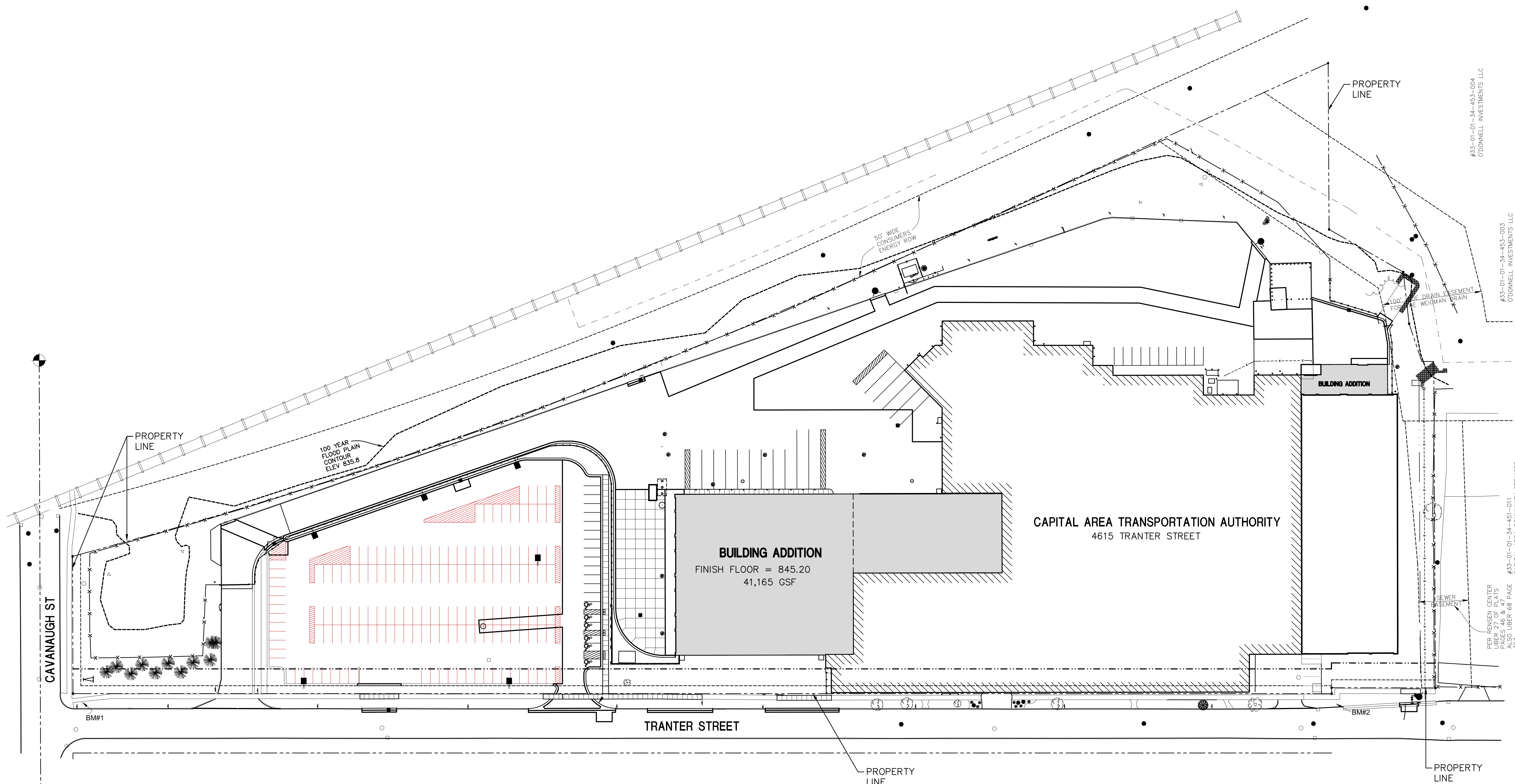


LOCATION MAP

SCALE: N.T.S.

LEGEND:

PROPERTY LINE	---
OVERHEAD LINE	—X—X—
FENCE	—X—X—
ELECTRIC LINE	—•—•—
WATERMAIN	—W—W—
STORM SEWER	—S—S—
NATURAL GAS LINE	—G—G—
SANITARY SEWER	—SAN—
UTILITY POLE	—U—U—
STORM MANHOLE	—SM—
WATER VALVE	—WV—
FIRE HYDRANT	—FH—
SAN MANHOLE	—SMH—
LIGHT POLE	—LP—
CATCHBASIN	—CB—
ELECTRIC RISER	—ER—
GUY ANCHOR	—GA—
TELEPHONE BOX	—TB—
SIGN	—S—
FLOODPLAIN LINE	—FL—
OVERHEAD DOOR	—OD—
FOUND SURVEY MARKER	—FSM—
SOIL BORING	—SB—
EXISTING LIGHT	—EL—



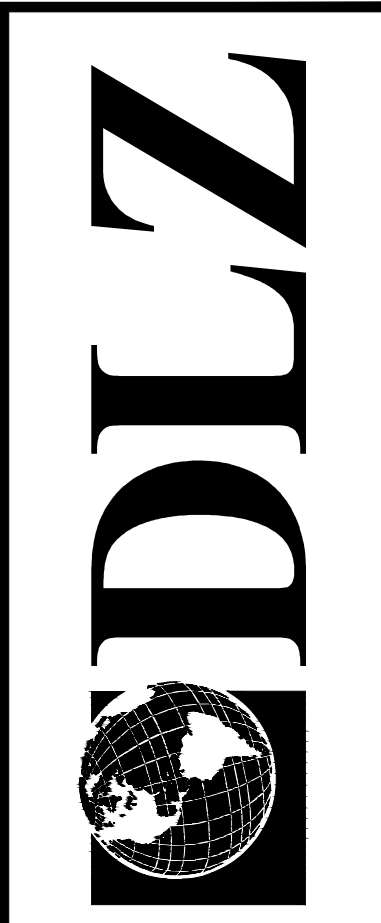
CAPITAL AREA TRANSPORTATION AUTHORITY
4615 TRANTER STREET

BUILDING ADDITION
FINISH FLOOR = 845.20
41,165 GSF

CAVANAUGH ST

TRANTER STREET

SEE FENCED CENTER
LIBER 271 & 272
PAGES 46 & 47
ALSO LIBER 68 PAGE
363
#33-01-01-34-451-011
CAPITAL AREA COMMUNITY SERVICES



REVISIONS:	DESCRIPTION	BY	DATE

LANSING MICHIGAN
**CAPITAL AREA TRANSPORTATION AUTHORITY
NORTH & SOUTH FACILITY EXPANSION**
**GENERAL INFORMATION
SNOW STORAGE PLAN**

SHEET
OF
DRAWING NUMBER

DATE OF PLAN: 8.21.15