

EXHIBIT A
SCOPE OF WORK

1. General Provisions

A. Contractor shall furnish all plant, labor, tools, and materials necessary for the installation of a concrete valley gutter at Capital Area Transportation Authority (CATA) Administration Building, located at 4516 Tranter Street, Lansing, Michigan, 48910.

B. All work must conform to all state and local construction regulations. The Contractor will be responsible for obtaining and paying for all required permits. The Contractor will be responsible for coordinating and scheduling all work with CATA Staff, Miss Dig and local jurisdictions.

C. The Contractor is responsible to visit each site location to determine the work required to meet the American Disabilities Act (ADA).

2. Scope of Work

A. The Contractor shall perform the following:

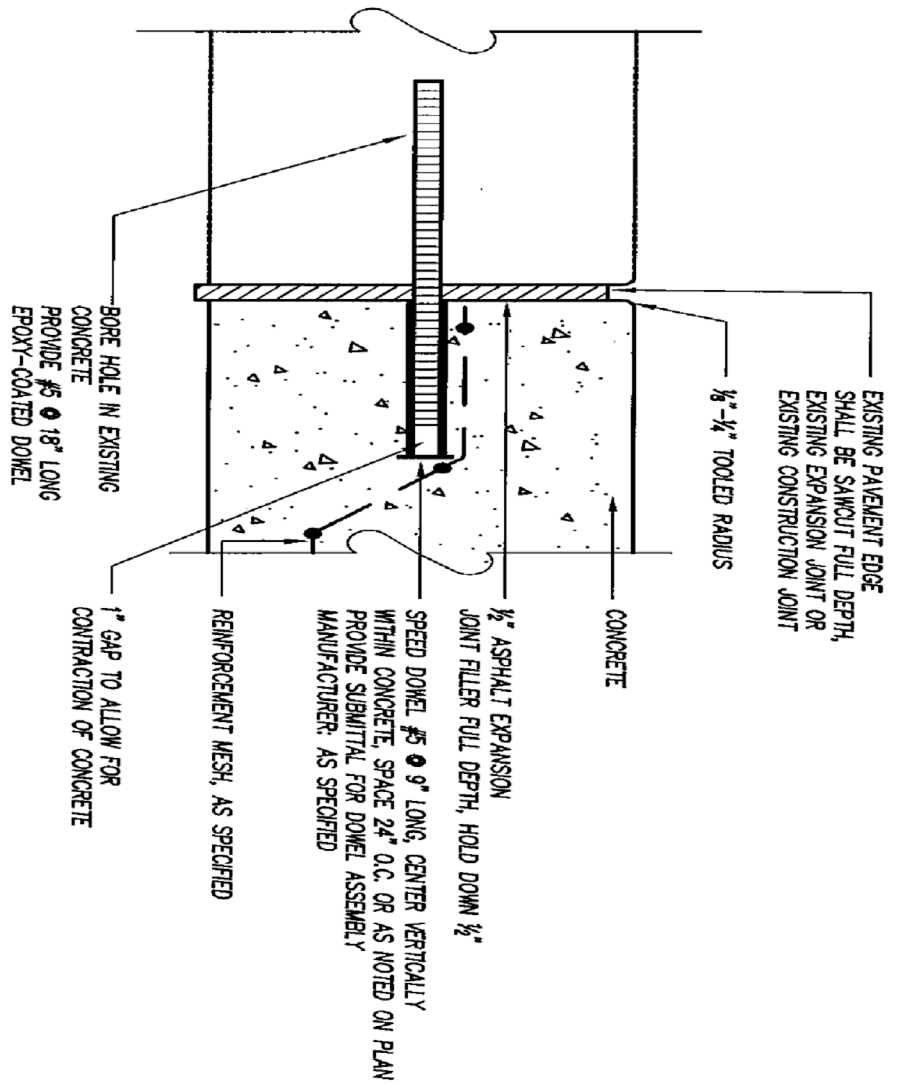
- Construct one (1) concrete valley gutter according to attached site plans.
- Removal and installation of eight (8) inch aggregate base, priced per square yard.
- Removal and installation of twelve (12) inch granular material, priced per square yard.
- Concrete pad will be a minimum of nine (9) inches thick by four (4) feet wide and sixty-nine-point-nine (69.6) feet long, continuously.

B. Specifications:

- All concrete shall be 9+MDOT P1, 6 SACK, with 8+Aggregate Base, MDOT 21AA, CIP and 12+MIN. GRANULAR MATERIAL, MDOT CLASS II CIP.
- All expansion joints at existing pavement require speed dowels, per attached drawing (see Drawing, identified as EXPANSION JOINT AT EXISTING PAVEMENT, attached hereto as Page 2).

C. Additional Terms and Conditions:

- Contractor assumes full responsibility for protection and safekeeping of materials and equipment on-site.
- Barricades must be placed around each excavation and concrete pour.
- Site must be made safe and hazard free at all times until the work is completed.
- The Contractor shall complete his work and be cleaned up by 4:00 pm each day.
- The Contractor must provide steel plates to allow employee access to propane and unleaded gas fuel pumps.



END OF SECTION

X
 X-X
 SCALE: 3"=1'-0"
EXPANSION JOINT AT EXISTING PAVEMENT