

**Capital Area Transportation Authority**  
***Radio Project***  
**Request for Proposal # 2013-102**

**Attachment A**  
**Photos and Diagrams**

**Issued On February 27, 2013**

**Photos of Present Systems**



CATA Top antenna – 140'



CATA Lower antenna – 70'

Note: This antenna was lowered to around 50 in attempt to provide more space between antenna and sidearm mount.



Transmitter Building Ground Bar

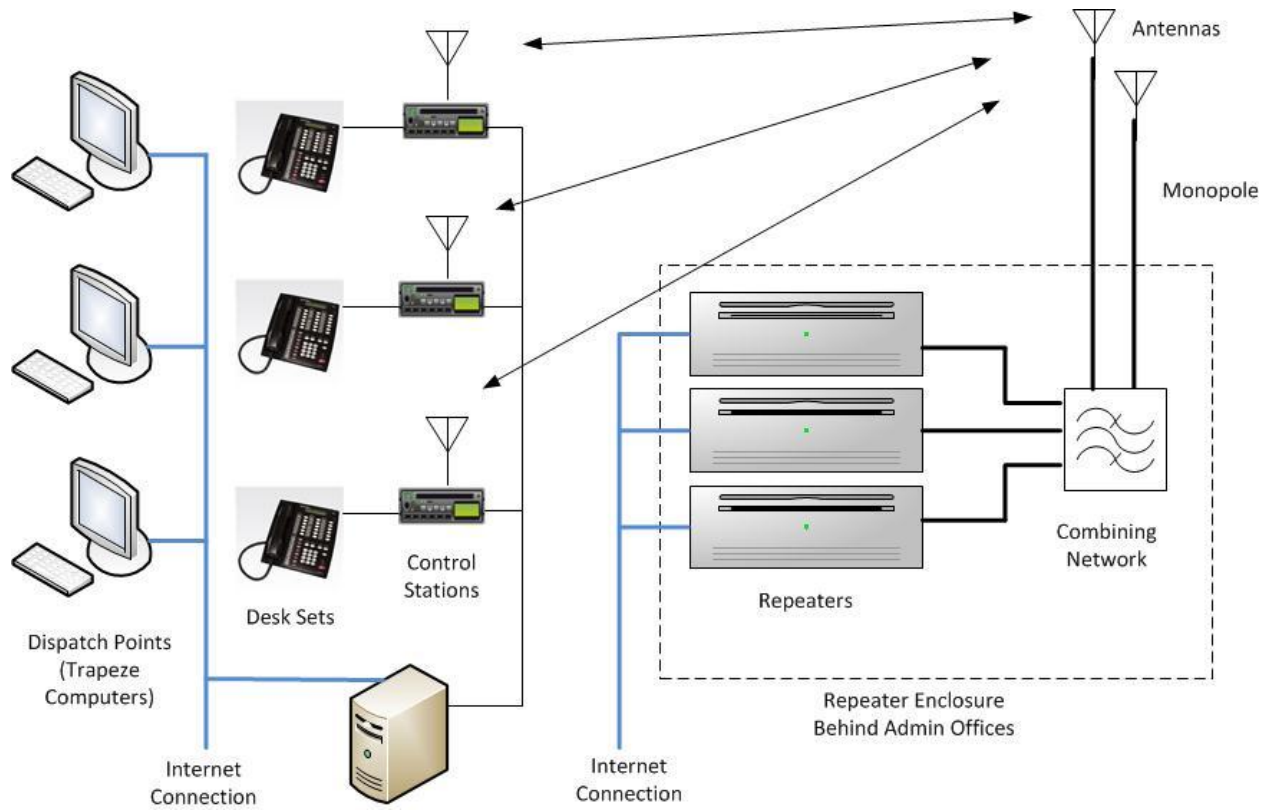


Transmitter Building Transmission Line Entry Point

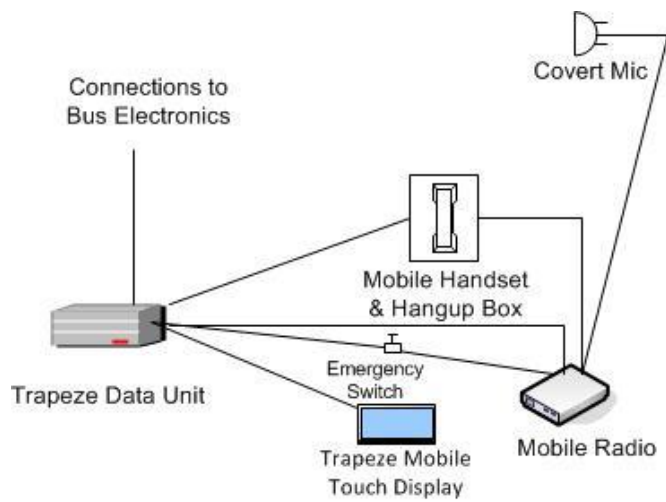


CATA System UPS

### Block Diagram Requested System



CATA Dispatch Facility



Bus Radio / Data Install