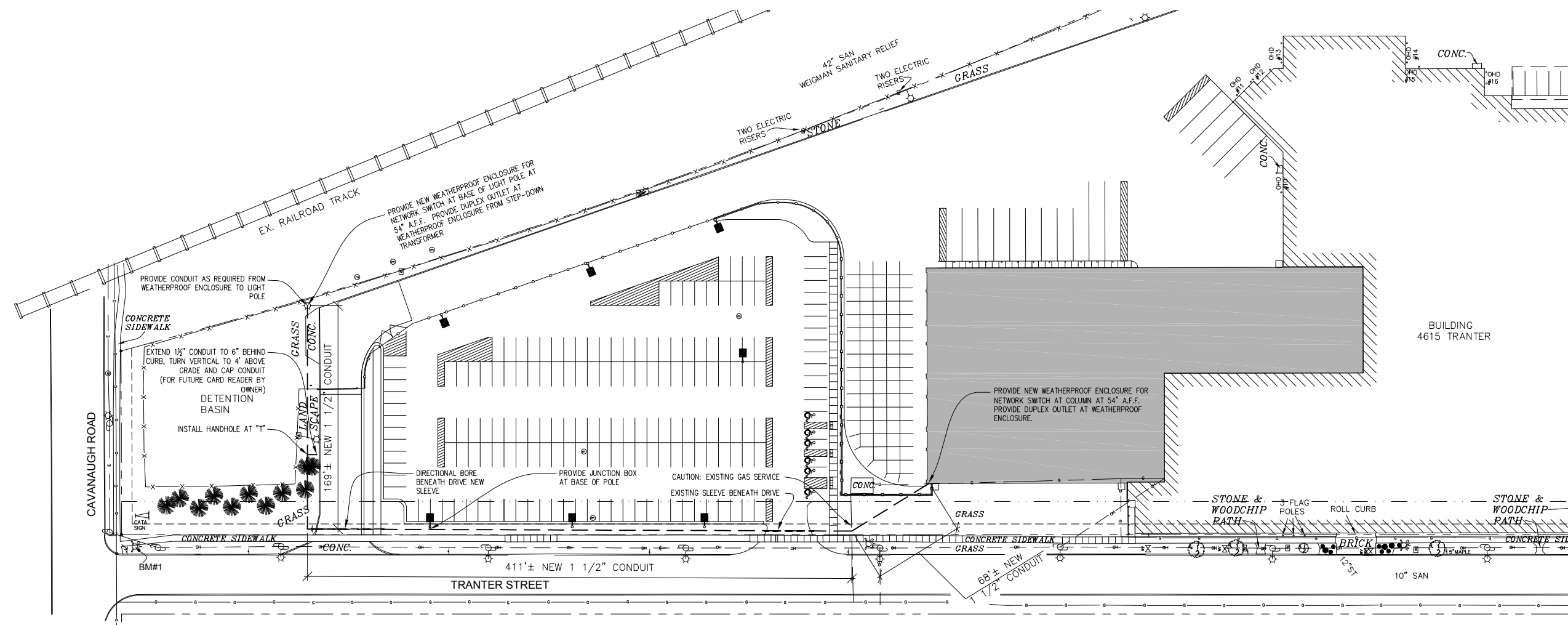
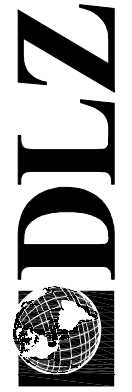


GENERAL NOTES

1. PROPOSED ROUTING OF CONDUIT FOR LOW-VOLTAGE/SECURITY CABLING IS APPROXIMATE. ROUTE CONDUIT IN AN ORGANIZED MANNER.
2. CONTRACTOR SHALL INCLUDE ALL NECESSARY FITTINGS, ELBOWS, ETC. AS NEEDED TO COMPLETE INSTALLATION.
3. INSTALL TRACING CABLE AND PULL STRING IN ALL NEW CONDUITS.
4. ROUTE SURFACE-MOUNTED CONDUIT ON LEAST CONSPICUOUS SIDE OF CONCRETE LIGHT POLE BASES AND INTO BASE OF LIGHT POLE.
5. INSTALL HANDHOLES AS REQUIRED FOR CABLE PULLS.
6. RESTORE ALL LAWN AND LANDSCAPING IN AFFECTED AREAS TO MATCH EXISTING.
7. INSTALL TWO (2) 4 STRAND INDOOR/OUTDOOR OM3 MULTIMODE FIBER OPTIC CABLES FROM THE NETWORK OPERATIONS CENTER TO THE WEATHERPROOF ENCLOSURES. TERMINATE AND TEST THE FIBER STRANDS AND PROVIDE THE TEST RESULTS.
8. INSTALL ONE (1) 1/4" INNERDUCT IN HIGH BAY AREAS FOR FIBER OPTIC CABLE.

LEGEND:

- PROPERTY LINE
- OVERHEAD LINE
- FENCE
- ELECTRIC LINE
- WATERMAIN
- STORM SEWER
- NATURAL GAS LINE
- SANITARY SEWER
- UTILITY POLE
- STORM MANHOLE
- WATER VALVE
- FIRE HYDRANT
- SAN MANHOLE
- LIGHT POLE
- CATCHBASIN
- ELECTRIC RISER
- GUY ANCHOR
- TELEPHONE BOX
- SIGN
- FLOODPLAIN LINE
- OVERHEAD DOOR
- FOUND SURVEY MARKER
- SOIL BORING
- PROPOSED FENCE
- PROJECT LIMITS
- PROPOSED SWALE
- PROPOSED FIRE HYDRANT
- EXISTING LIGHT
- PROPOSED CATCH BASIN



SECURITY INFRASTRUCTURE PLAN

SCALE: 1" = 40'

DATE: OCTOBER 16, 2012	COMMENTS: REVISED AND REISSUED OCTOBER 16, 2012
------------------------	---

PROJECT NUMBER	0941.6302.00
----------------	--------------

MICHIGAN
 CAPITAL AREA TRANSPORTATION AUTHORITY
 NORTH & SOUTH FACILITY EXPANSION
 BULLETIN 10
 SECURITY INFRASTRUCTURE PLAN

SHEET	1
OF	1

DRAWING NUMBER

