



## Addendum 02

---

**Project:** CATA Bus Depot Renovation

**Date:** May 26, 2026

**Project No:** 75820026

**To:** Public

### AD2-1 NOTICE

- A. This Addendum to the specifications and drawings for the above-captioned project adds to or supersedes all contrary or conflicting information in specifications and drawings which is amended in the following paragraphs. This Addendum is to become part of bidding documents as originally issued.
- B. Each trade shall review the entire Addendum, including work of other trades, for revisions or clarifications regarding their own work.
- C. This Addendum includes Pre-Bid Questions and Responses, Pre-Bid Walk Minutes, and updated documents.

### AD2-2 PRE BID QUESTIONS

- A. QUESTION RECEIVED:** We need cold joint details. Are they drilled and doweled? Spacing? Dowel size?

**Response:** Drill and grout. 1" bar at 1' on center.

- B. QUESTION RECEIVED:** Are all slabs to be cured with a salt guard cure?

**Response:** Yes.

- C. QUESTION RECEIVED:** Are 6" slabs to be reinforced?

**Response:** Yes. Note added to pavement legend. WWF 6x6 – W4.0xW4.0 (in flat sheets).

- D. QUESTION RECEIVED:** Who is responsible for testing? If it is up to the contractor, will we have to do compaction/ concrete tests?

**Response:** Contractor to coordinate compaction and concrete testing.

- E. QUESTION RECEIVED:** I noticed the drawings and elevations for the ticket counter mention bullet-resistant glass and high impact GWB. Is this existing or will it be installed as part of this project? I do not see either mentioned in the finish schedule or the project manual so I wanted to confirm I'm not excluding this from our bid if it is to be included in the project.

**Response:** Both will be installed new and part of this project. For the bullet resistant transaction windows, our basis of design will be a hollow metal frame with laminated glazing units to meet a minimum Class 2 security rating. Refer to updated Specification 09 2116 Gypsum Board Assemblies.

**F. QUESTION RECEIVED:** Is there a specification for the metal roof panel color?

**Response:** To be selected from Manufacturer Standard color.

**G. QUESTION RECEIVED:** The plans mention FRP in the Finish Material List, but I do not see it noted in the drawings. Where is the FRP to be installed?

**Response:** FRP-1 to be installed at JAN 121C floor sink.

**H. QUESTION RECEIVED:** One of our asphalt contractors requested specifications and/or a cross-section of the area to be patched if possible. The drawings say to match existing currently.

**Response:** Yes, refer to updated C201 Site Layout Plan-Plan.

**I. QUESTION RECEIVED:** We received notification from the manufacturer regarding precast concrete segmental retaining wall required for the project. I have reviewed the project plans at The Builders Exchange of Lansing and can find no reference to segmental retaining wall. Is there an unreleased package that I am missing? Am I correct in assuming there is none on this project?

**Response:** No segmental retaining wall on this project.

**J. QUESTION RECEIVED:** What is the policy on operating equipment on site with this being an open /running business? Will we need a ground guy to run cones and tape off the area while guys are installing the main Lobby lighting?

**Response:** Any and all standard safety practices such as cones, construction fencing, caution tape, or other means can be utilized to allow safe usage of operating equipment. Additionally, CATA can close off sections of the building to accommodate construction activities.

**K. QUESTION RECEIVED:** Emergency fixtures- GPX baggage area, M Toil, Drivers, W Toilet, Security, Super and unmarked aera do not show any emergency fixtures. They are existing but could become an issue upon inspection that we are required to correct. What does CATA want to do with these areas?

**Response:** Hold allowance to address emergency fixtures in these areas should they become an issue during inspection.

**L. QUESTION RECEIVED:** We need the Location of the Data/IT room, Panel.

**Response:** The IT/data rack is located in I/C Cash 106.

**M. QUESTION RECEIVED:** Will the facility be open during construction?

**Response:** The facility will be active and open during construction, and the contractor will need to work with the Owner to identify how to phase the work.

**N. QUESTION RECEIVED:** The plan shows the panels RPB and LPB located on different walls than what we saw in the walk thru, do they want these relocated or was this just a drawing error?

**Response:** The panels are to remain in their existing locations. Locations on plans will be updated to reflect existing conditions.

**O. QUESTION RECEIVED: Substitution Request for Section 10 2113.19 Plastic Toilet Compartments**

**1. Metpar Phenolic, Scranton Products**

**Response: Substitution approved.**

**P. QUESTION RECEIVED: Substitution Request for competitive lighting bid.**

**1. Equals to basis of design, DIODE, AEL**

**Response: Substitution approved, with corrections noted.**

**AD2-3 PRE BID WALK MINUTES**

Meeting Date: May 6, 2026, at 10:30 AM.

Meeting Location: 511 Washington Ave, Lansing and 420 S Grand Ave, Lansing, MI 48933

Attendees: Refer to Addendum 01 for Attendees Sign in Sheet

Nicole reviewed the submission process, noting that proposals are due June 8 at 1:30 PM, as outlined in the project specifications.

- The public bid opening will be at CATA's Administrative Building, located at 4615 Tranter Street in Lansing. Visitors may park along Tranter Street or at the north end of the building in the employee lot. The gate will be open for visitor parking.
- Provided an overview of the project and highlighted all required documents and certifications for submission, as identified in the specifications.
- Emphasized the importance of the Build America, Buy America Certification, noting to read through the entire document and sign only once where required to comply or not comply with the requirement.
- Highlighted Davis-Bacon wage rate requirements, stating that compliance will be reviewed and verified.
- Reviewed key elements of the bid form.

Nicole noted that amendments will be issued, which will include:

- Responses to RFIs.
- Minutes from the pre-bid walk.
- Pre-bid sign-in sheet.

Chris Gillen provided additional details regarding the project scope, including:

- Site work related to concrete aprons.
- Finish upgrades throughout the facility.
- Limited interior scope within the office area, including millwork.
- Exterior door replacement and associated hardware.

During the site walk, the following items were discussed:

- Contractor parking to be at 511 Washington building during construction.
- Material loading is preferred at south end of facility.
- Resinous floor in main area to continue into Resource Room.
  - Refer to updated A403 Finish Plans & Finish Material List.

**AD2-4 ATTACHMENTS**

- A.** 09 2116 - Gypsum Board Assemblies
- B.** C201 - SITE LAYOUT PLAN-PLAN
- C.** A403 - FINISH PLANS & FINISH MATERIAL LIST

AR/pny  
\\DMS1\Projects\75820026\05 CA\E1 BIDDING NEGOTIATION\Addenda\2026 05 26 Addendum 02.docx

## SECTION 09 2116 GYPSUM BOARD ASSEMBLIES

---

### PART 1 GENERAL

#### 1.01 SECTION INCLUDES

- A. Metal stud wall framing.
- B. Cementitious backing board.
- C. Gypsum wallboard.
- D. Joint treatment and accessories.

#### 1.02 REFERENCE STANDARDS

- A. AISI S201 - North American Standard for Cold-Formed Steel Framing - Product Data; 2017.
- B. AISI S220 - North American Standard for Cold-Formed Steel Nonstructural Framing; 2020.
- C. AISI S240 - North American Standard for Cold-Formed Steel Structural Framing; 2020.
- D. ANSI A108.11 - American National Standard Specifications for Interior Installation of Cementitious Backer Units; 2023.
- E. ANSI A118.9 - American National Standard Specifications for Test Methods and Specifications for Cementitious Backer Units; 2023.
- F. ASTM A653/A653M - Standard Specification for Steel Sheet, Zinc-Coated (Galvanized) or Zinc-Iron Alloy-Coated (Galvannealed) by the Hot-Dip Process; 2025a.
- G. ASTM A1003/A1003M - Standard Specification for Steel Sheet, Carbon, Metallic- and Nonmetallic-Coated for Cold-Formed Framing Members; 2025.
- H. ASTM C475/C475M - Standard Specification for Joint Compound and Joint Tape for Finishing Gypsum Board; 2017 (Reapproved 2022).
- I. ASTM C754 - Standard Specification for Installation of Steel Framing Members to Receive Screw-Attached Gypsum Panel Products; 2020.
- J. ASTM C840 - Standard Specification for Application and Finishing of Gypsum Board; 2025.
- K. ASTM C954 - Standard Specification for Steel Drill Screws for the Application of Gypsum Panel Products or Metal Plaster Bases to Steel Studs from 0.033 in. (0.84 mm) to 0.112 in. (2.84 mm) in Thickness; 2022.
- L. ASTM C1047 - Standard Specification for Accessories for Gypsum Wallboard and Gypsum Veneer Base; 2019.
- M. ASTM C1288 - Standard Specification for Fiber-Cement Interior Substrate Sheets; 2023.
- N. ASTM C1325 - Standard Specification for Fiber-Mat Reinforced Cementitious Backer Units; 2025.
- O. ASTM D3273 - Standard Test Method for Resistance to Growth of Mold on the Surface of Interior Coatings in an Environmental Chamber; 2021.
- P. GA-216 - Application and Finishing of Gypsum Panel Products; 2024.

#### 1.03 SUBMITTALS

- A. See Section 01 3000 - Administrative Requirements for submittal procedures.
- B. Product Data:
- C. Steel Framing Industry Association (SFIA) Certification:
  - 1. Submit documentation that metal studs and connectors used on project meet or exceed requirements of International Building Code.
  - 2. Submit current documentation of contractor and fabricator accreditation. Keep copies of each on-site during and after installation, and present upon request.

### PART 2 PRODUCTS

#### 2.01 GYPSUM BOARD ASSEMBLIES

- A. Provide completed assemblies complying with ASTM C840 and GA-216.

#### 2.02 METAL FRAMING MATERIALS

- A. Material and Product Requirements: AISI S201 and AISI S220.
- B. Steel Sheet: ASTM A1003/A1003M, subject to the ductility limitations indicated in AISI S220 or equivalent.

## SECTION 09 2116 GYPSUM BOARD ASSEMBLIES

---

- C. Nonstructural Framing System Components: AISI S220; galvanized sheet steel, of size and properties necessary to comply with ASTM C754 for the spacing indicated, with maximum deflection of wall framing of L/120 at 5 psf.
  - 1. Studs: C-shaped with knurled or embossed faces.
  - 2. Runners: U shaped, sized to match studs.

### 2.03 BOARD MATERIALS

- A. Impact Resistant Wallboard:
  - 1. Application: High-traffic areas indicated.
  - 2. Mold Resistance: Score of 10, when tested in accordance with ASTM D3273.
  - 3. Type: Fire-resistance-rated Type X, UL or WH listed.
  - 4. Thickness: 5/8 inch.
  - 5. Edges: Tapered.
- B. Backing Board For Wet Areas: One of the following products:
  - 1. Application: Surfaces behind tile in wet areas, including manufactured housing, tub and shower surrounds, and shower ceilings.
  - 2. ANSI Cement-Based Board: Non-gypsum-based; aggregated Portland cement panels with glass fiber mesh embedded in front and back surfaces complying with ANSI A118.9 or ASTM C1325.
    - a. Thickness: 1/2 inch.
  - 3. ASTM Cement-Based Board: Non-gypsum-based, cementitious board complying with ASTM C1288.
    - a. Thickness: 1/2 inch.

### 2.04 GYPSUM BOARD ACCESSORIES

- A. Finishing Accessories:
  - 1. Types: As detailed or required for finished appearance.
  - 2. Materials: 6063-T5 extruded aluminum alloy and G40 galvanized steel sheet in accordance with ASTM A653/A653M.
- B. Beads, Joint Accessories, and Other Trim: ASTM C1047, rigid plastic, galvanized steel, or rolled zinc, unless noted otherwise.
- C. Joint Materials: ASTM C475/C475M and as recommended by gypsum board manufacturer for project conditions.
- D. Screws for Fastening of Gypsum Panel Products to Steel Members from 0.033 to 0.112 inch in Thickness: ASTM C954; steel drill screws, corrosion-resistant.

## PART 3 EXECUTION

### 3.01 EXAMINATION

- A. Verify that project conditions are appropriate for work of this section to commence.

### 3.02 FRAMING INSTALLATION

- A. Metal Framing: Install in accordance with ASTM C754 and manufacturer's instructions.
- B. Studs: Space studs at 16 inches on center.
  - 1. Extend partition framing to structure where indicated and to ceiling in other locations.
  - 2. Partitions Terminating at Ceiling: Attach ceiling runner securely to ceiling track in accordance with manufacturer's instructions.
  - 3. Partitions Terminating at Structure: Attach extended leg top runner to structure, maintain clearance between top of studs and structure, and brace both flanges of studs with continuous bridging.
  - 4. Partitions Terminating at Structure: Attach top runner to structure, maintain clearance between top of studs and structure, and connect studs to track using specified mechanical devices in accordance with manufacturer's instructions; verify free movement of top of stud connections; do not leave studs unattached to track.
- C. Openings: Reinforce openings as required for weight of doors or operable panels, using not less than double studs at jambs.
- D. Blocking: Install mechanically fastened steel sheet blocking for support of:
  - 1. Framed openings.
  - 2. Wall-mounted cabinets.

## **SECTION 09 2116 GYPSUM BOARD ASSEMBLIES**

---

3. Plumbing fixtures.
4. Toilet partitions.
5. Toilet accessories.

### **3.03 BOARD INSTALLATION**

- A. Comply with ASTM C840, GA-216, and manufacturer's instructions. Install to minimize butt end joints, especially in highly visible locations.
- B. Cementitious Backing Board: Install over steel framing members and plywood substrate where indicated, in accordance with ANSI A108.11 and manufacturer's instructions.

### **3.04 INSTALLATION OF TRIM AND ACCESSORIES**

- A. Control Joints: Place control joints consistent with lines of building spaces and as indicated on drawings.
- B. Corner Beads: Install at external corners, using longest practical lengths.

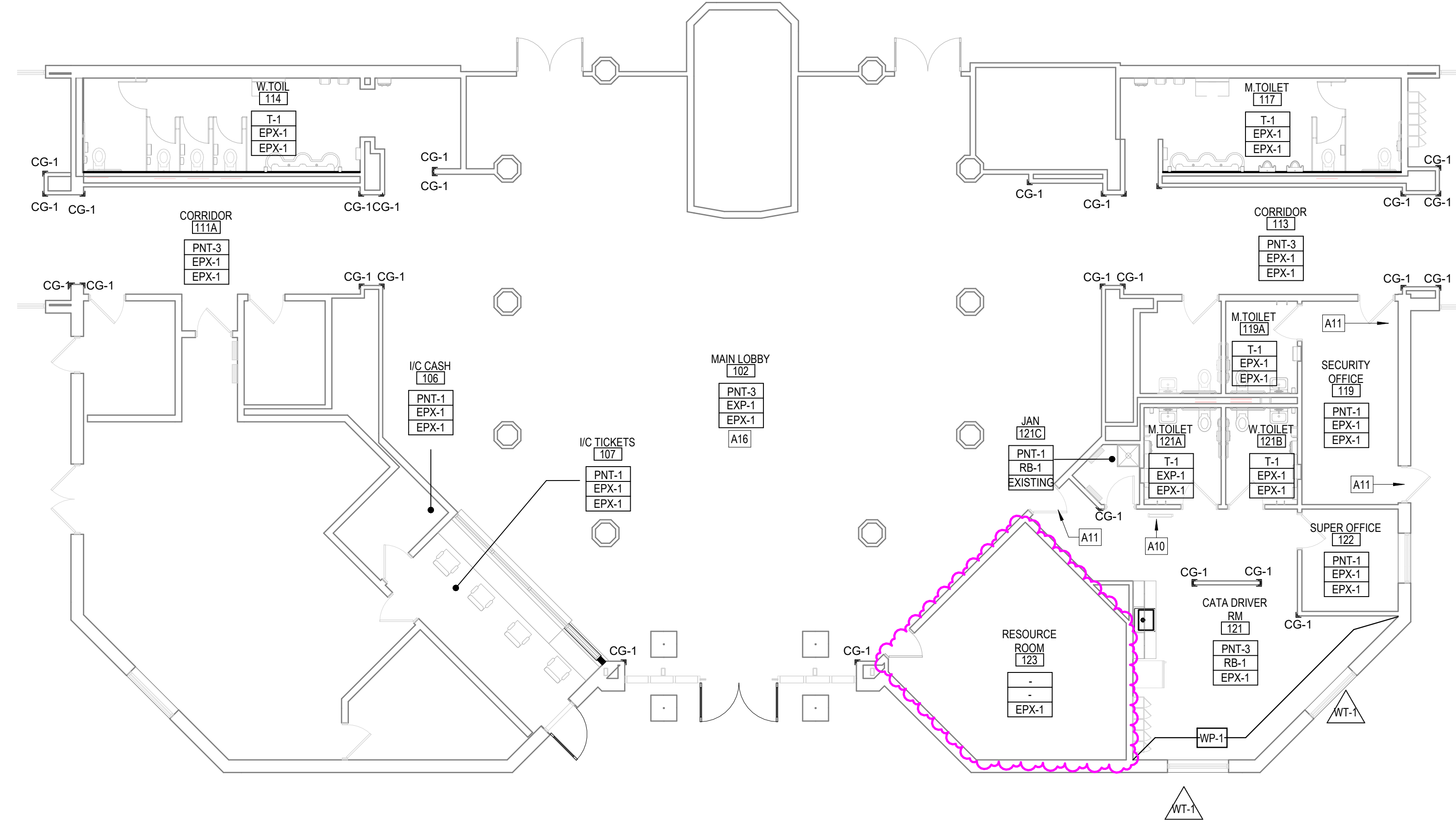
### **3.05 JOINT TREATMENT**

- A. Finish gypsum board in accordance with levels defined in ASTM C840, as follows:
  1. Level 1: Fire-resistance-rated wall areas above finished ceilings, whether or not accessible in the completed construction.
- B. Tape, fill, and sand exposed joints, edges, and corners to produce smooth surface ready to receive finishes.
  1. Feather coats of joint compound so that camber is maximum 1/32 inch.

**END OF SECTION**

### FINISH MATERIAL LIST

| MARK                    | TYPE                     | MANUFACTURER             | STYLE / PATTERN / FINISH                         | SIZE               | COLOR                          | NOTES  | REPRESENTATIVE |
|-------------------------|--------------------------|--------------------------|--|--------------------|--------------------------------|--|----------------|
| <b>10 FLOORS</b>        |                          |                          |  |                    |                                |  |                |
| EPX-1                   | RESINOUS EPOXY           | SIKA                     | DECODUR FLAKE FX 1/8" CONTEMPORARY BLENDS        |                    | COULÉE                         | WITH INTERGAL BASE, MATCH EXISTING BASE HEIGHT                 |                |
| <b>20 BASE</b>          |                          |                          |  |                    |                                |  |                |
| RB-1                    | RESILIENT BASE           | ROPPE                    | COVED BASE                                       | 4"                 | CHARCOAL 123                   |  |                |
| <b>30 WALLS</b>         |                          |                          |  |                    |                                |  |                |
| FRP-1                   | FIBER REINFORCED PLASTIC | MARLITE                  |  |                    | BRIGHT WHITE FRP-1             |  |                |
| PNT-1                   | PAINT                    | SHERWIN WILLIAMS         |  |                    | GREEK VILLA SW 7551            |  |                |
| PNT-2                   | PAINT                    | SHERWIN WILLIAMS         |  |                    | CLASSIC FRENCH GRAY SW 9077    |  |                |
| PNT-3                   | PAINT                    | SHERWIN WILLIAMS         |  |                    | REPOSE GRAY SW7015             |  |                |
| T-1                     | WALL TILE                | CEASER                   | STONEWAYS  | 12"x24"            | VELVET OR SKY                  | MAPEI GROUT, ULTRACOLOR PLUS FA FLEX COLOR: 9009 GRAY          |                |
| <b>40 CEILING</b>       |                          |                          |  |                    |                                |  |                |
| ACP-1                   | ACOUSTICAL CEILING PANEL | ARMSTRONG                | ULTIMA SQUARE LAYIN WITH SUPRAFINE XL 9/16" GRID | 2'x2'              | WHITE                          |  |                |
| <b>50 CASEWORK</b>      |                          |                          |  |                    |                                |  |                |
| PL-1                    | PLASTIC LAMINATE         | PIONITE                  |  |                    | CUBICLE PAPEL                  | COUNTERTOP   |                |
| PL-2                    | PLASTIC LAMINATE         | ARBORITE                 | HIGH WEAR LAMINATE                               |                    | W499 CW ENCHANTED BLACK OAK    | CABINETS   |                |
| PL-3                    | PLASTIC LAMINATE         | WILSONART                |  |                    | GRAPHITE 10657-60 MATTE FINISH |  |                |
| SS-1                    | SOLID SURFACE            | CORIAN                   |  |                    | MODERN WHITE                   |  |                |
| <b>60 MISCELLANEOUS</b> |                          |                          |  |                    |                                |  |                |
| CG-1                    | CORNER GUARDS            | CONSTRUCTION SPECIALTIES | SSM 20 SERIES                                    | 2" LEGS, 4" LENGTH | GALVESTON GRAY #315            | APPLY TO FULL HEIGHT OF WINDOW WHERE INDICATED                 |                |
| GF-1                    | GLASS FILM               | SOLYX                    | SX-3140 DUSTED CRYSTAL                           | VARIES             | SX-3140 DUSTED CRYSTAL         |  |                |
| TP-1                    | TOILET PARTITIONS        | ASI GLOBAL PARTITIONS    | COLOR THRU PHENOLIC                              |                    | CHARCOAL 3077                  |  |                |
| WP-1                    | WALL PROTECTION          | CONSTRUCTION SPECIALTIES | ACROVYN WALL COVERING                            | 640"               | GALVESTON GRAY #315            | WITH MATCHING J-CHANNEL TRIM CAP, AND CONNECTOR BETWEEN PANELS |                |
| WT-1                    | ROLLER SHADES            | DRAPER                   | CLUTCH-OPERATED FLEX SHADE                       |                    | 3% PDS WHITE / PLATINUM        | FASCIA: WHITE  |                |



### FINISH GENERAL NOTES

- GENERAL
  - REPAIR ALL EXISTING MATERIALS SCHEDULED TO REMAIN, USING OWNER'S ATTIC STOCK. IF NO ATTIC STOCK EXISTS, USE NEW MATERIAL TO MATCH EXISTING.
- WALLS
  - PAIN FIRE EXTINGUISHER CABINETS TO MATCH ADJACENT WALL COLOR, UNLESS STAINLESS STEEL OR BRUSHED ALUMINUM FINISH.
  - REPAINT ENTIRE WALL SECTION WHERE DEMOLITION OCCURS TO PROVIDE THE BEST FINISH LOOK. COLOR TO MATCH ADJACENT WALL.
  - ALL HIGH IMPACT WALL PROTECTION SHALL TERMINATE AT 51" A.F.F.
- BULKHEADS
  - PAIN BULKHEAD FACE TO MATCH ADJACENT WALL COLOR.
- DOORS AND FRAMES
  - PAIN ALL INTERIOR HOLLOW METAL DOOR FRAMES. COLOR TO BE PNT-2.
  - PAIN ALL INTERIOR HOLLOW METAL DOORS. COLOR TO BE PNT-2.
- DIFFUSERS AND COVERS
  - PAIN WALL DIFFUSER AND AIR GRILLE COVERS TO MATCH ADJACENT WALL.

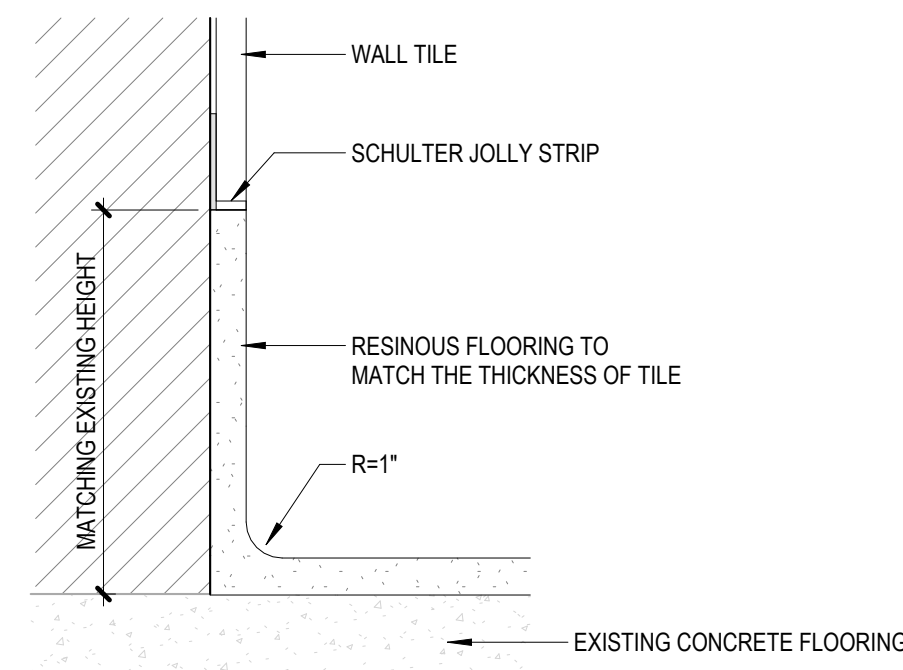
### FINISH PLAN LEGEND

- WINDOW TREATMENT LOCATION INDICATOR (WINDOW TREATMENTS TO SPAN ENTIRE LENGTH OF OPENING)
- WALL PROTECTION
- WALL FINISH EXTENTS
- FLOOR FINISH EXTENTS
- ROOM NAME TAG
- ROOM FINISH TAG
- FLOOR
- CORNER GUARDS

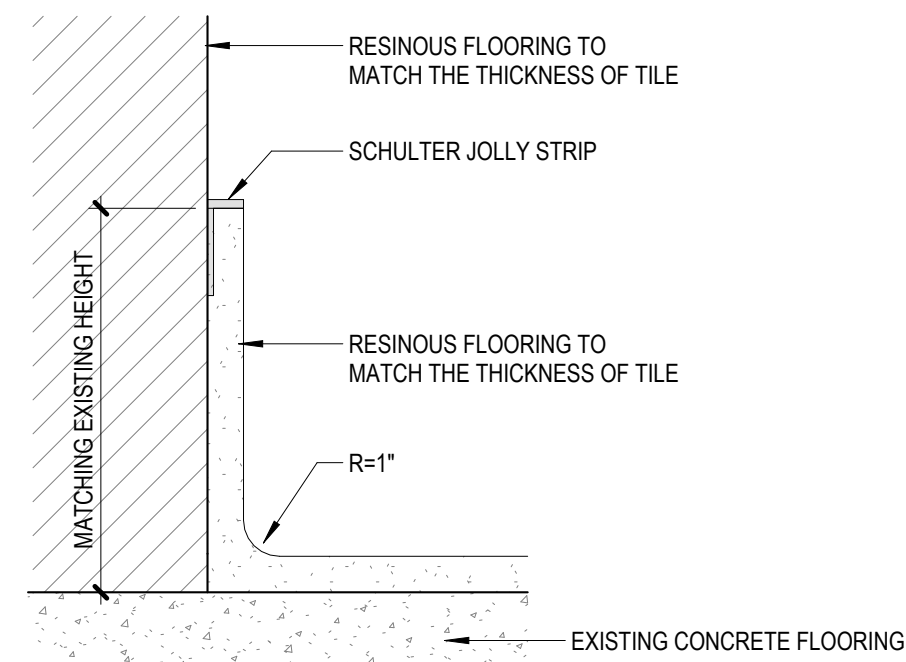
### KEYNOTES

| NUMBER | NOTE                                   |
|--------|--|
| A10    | PAIN ROOF ACCESS STAIR (PNT-1)         |
| A11    | PROVIDE GLASS FILM (GF-1) ON DOOR LITE |
| A16    | EXISTING STRUCTURAL FRAMING            |

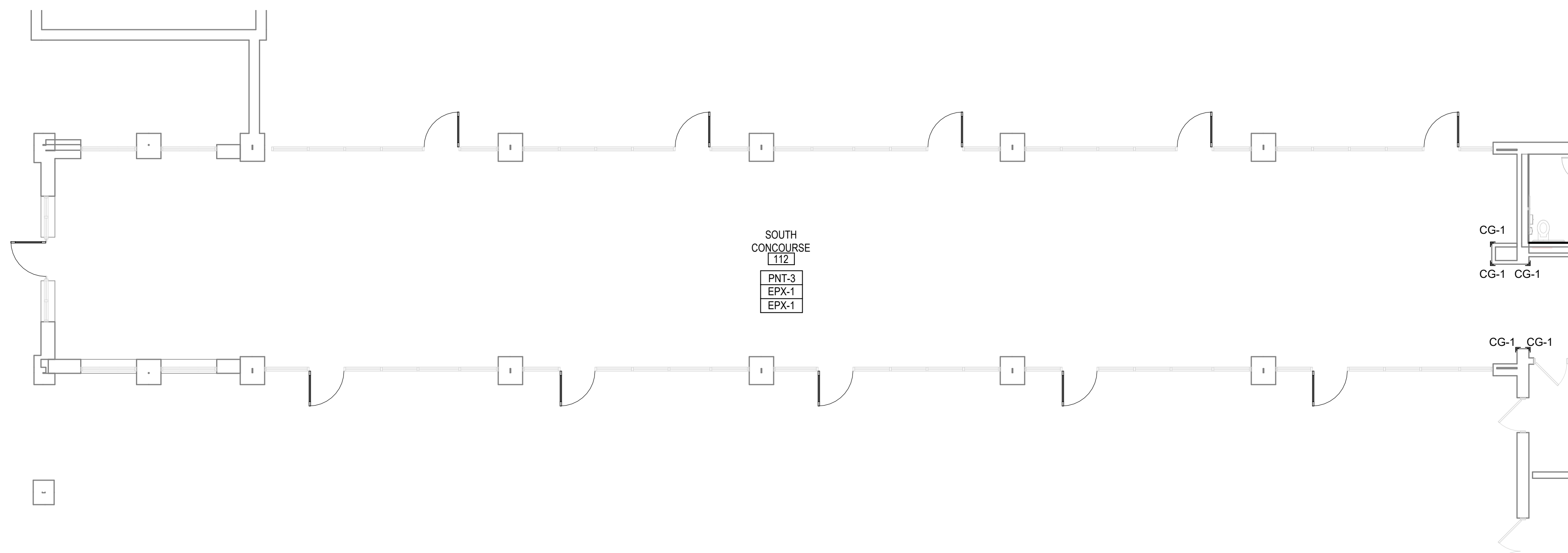
#### C7 EPOXY BASE DETAIL @ WALL TILE



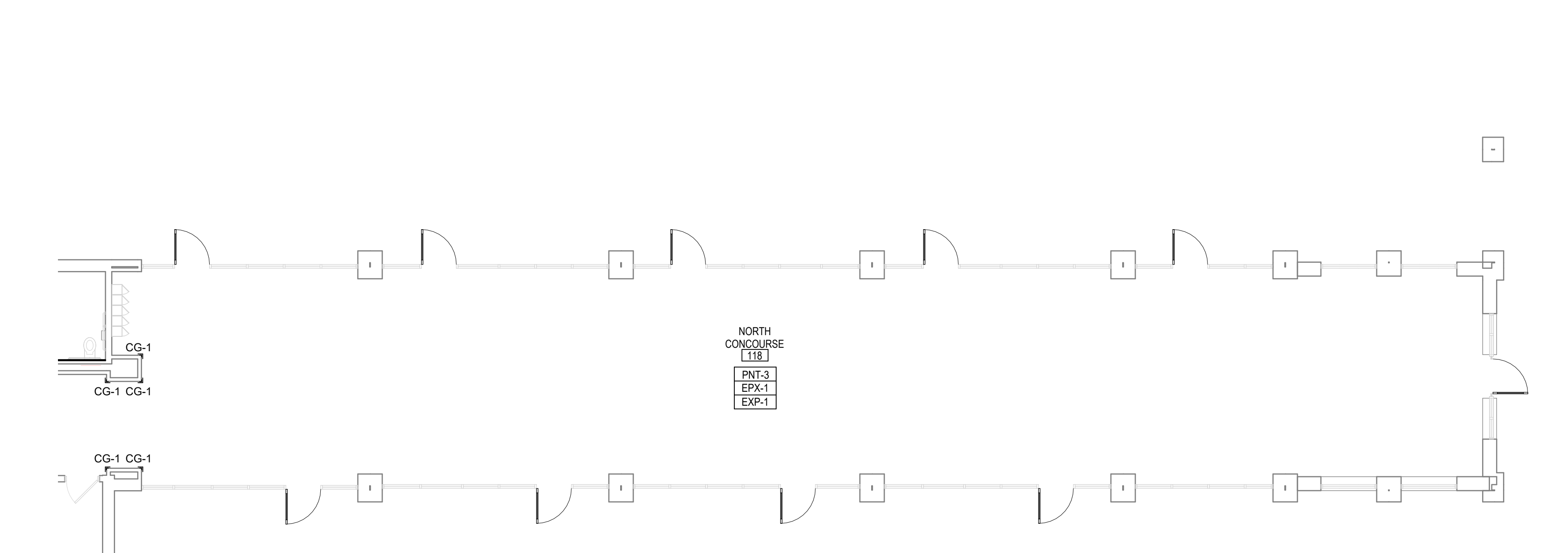
#### C6 EPOXY BASE DETAIL WALLS



#### FIRST FLOOR FINISH PLAN

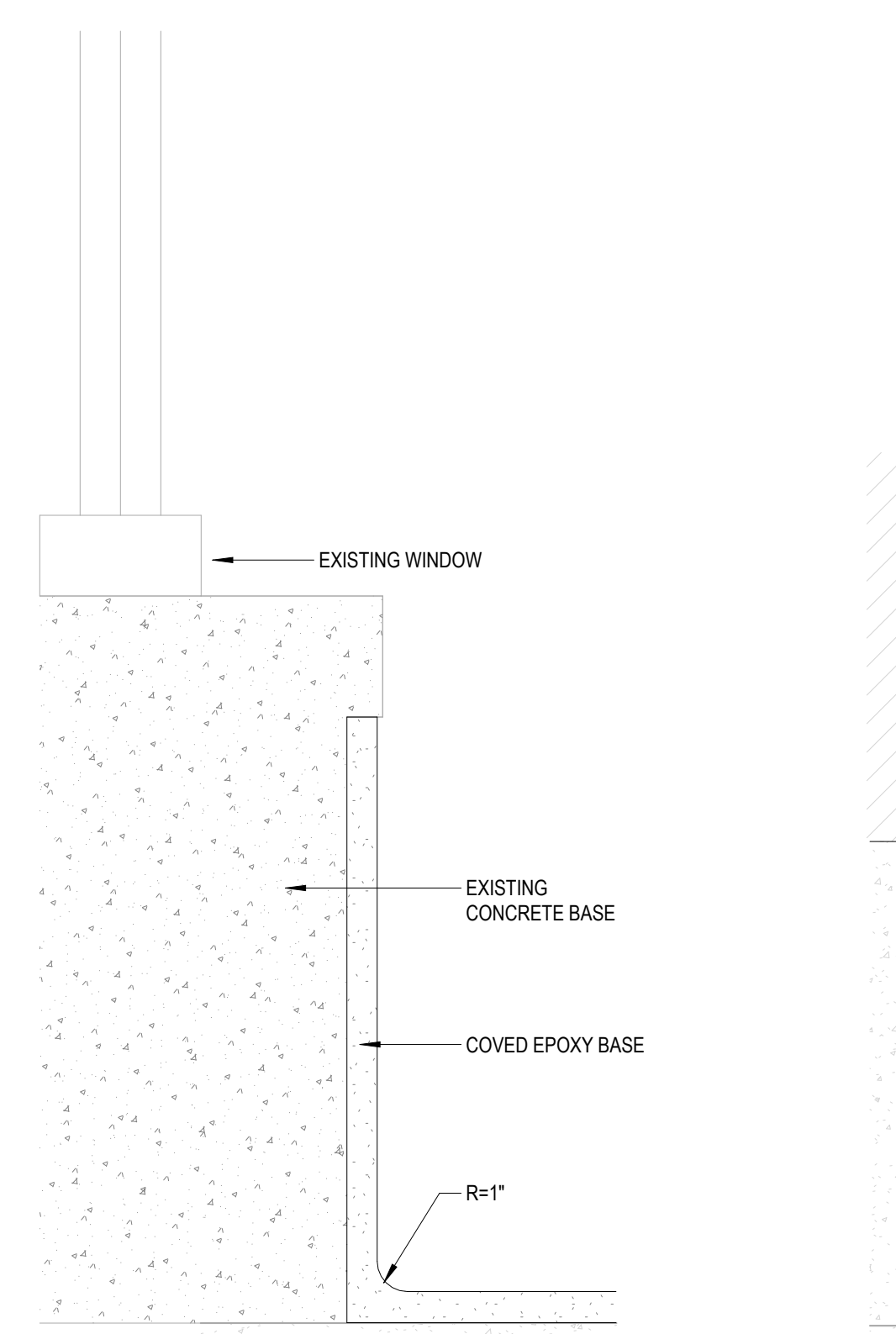


#### FIRST FLOOR FINISH PLAN

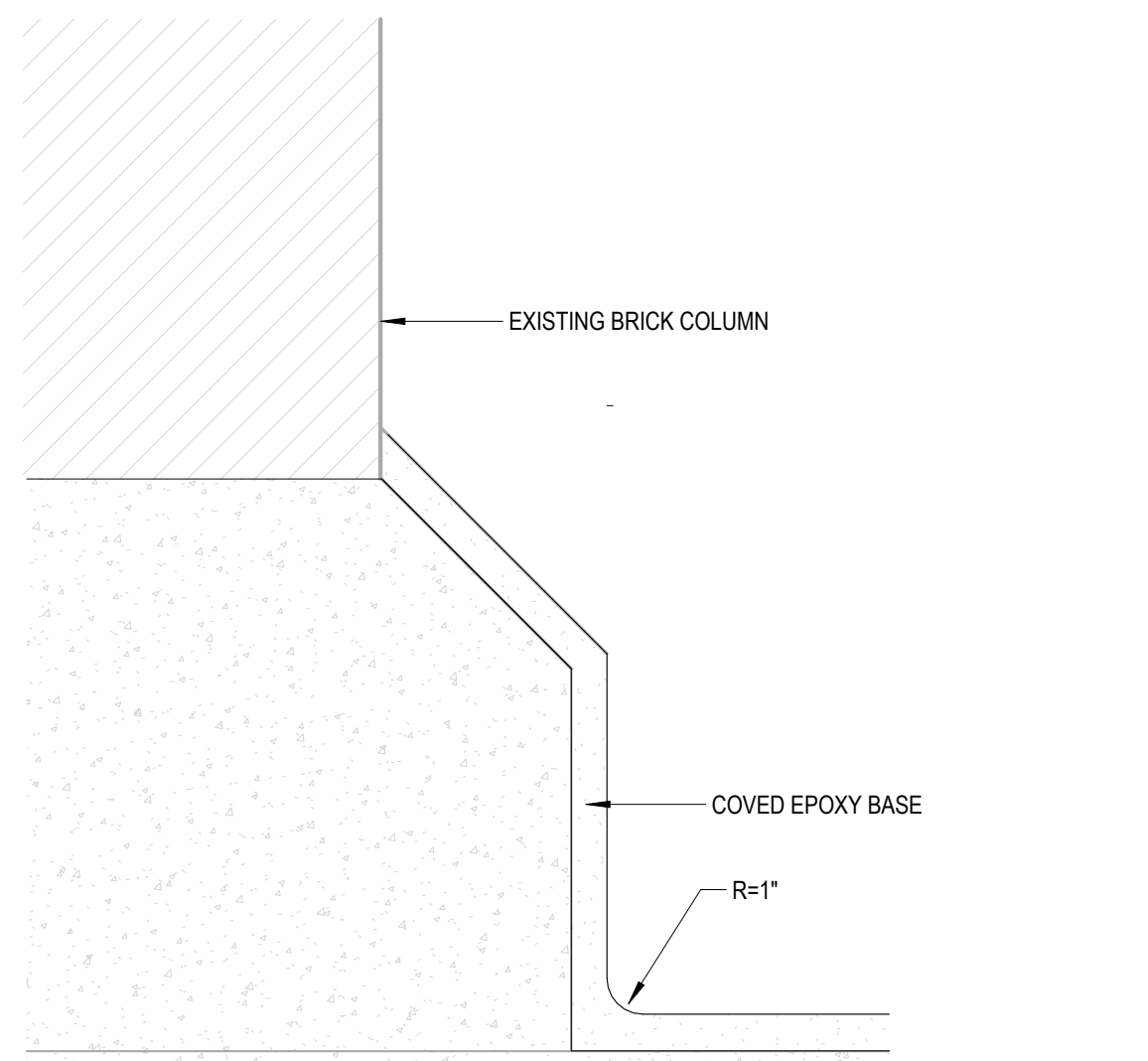


#### FIRST FLOOR FINISH PLAN

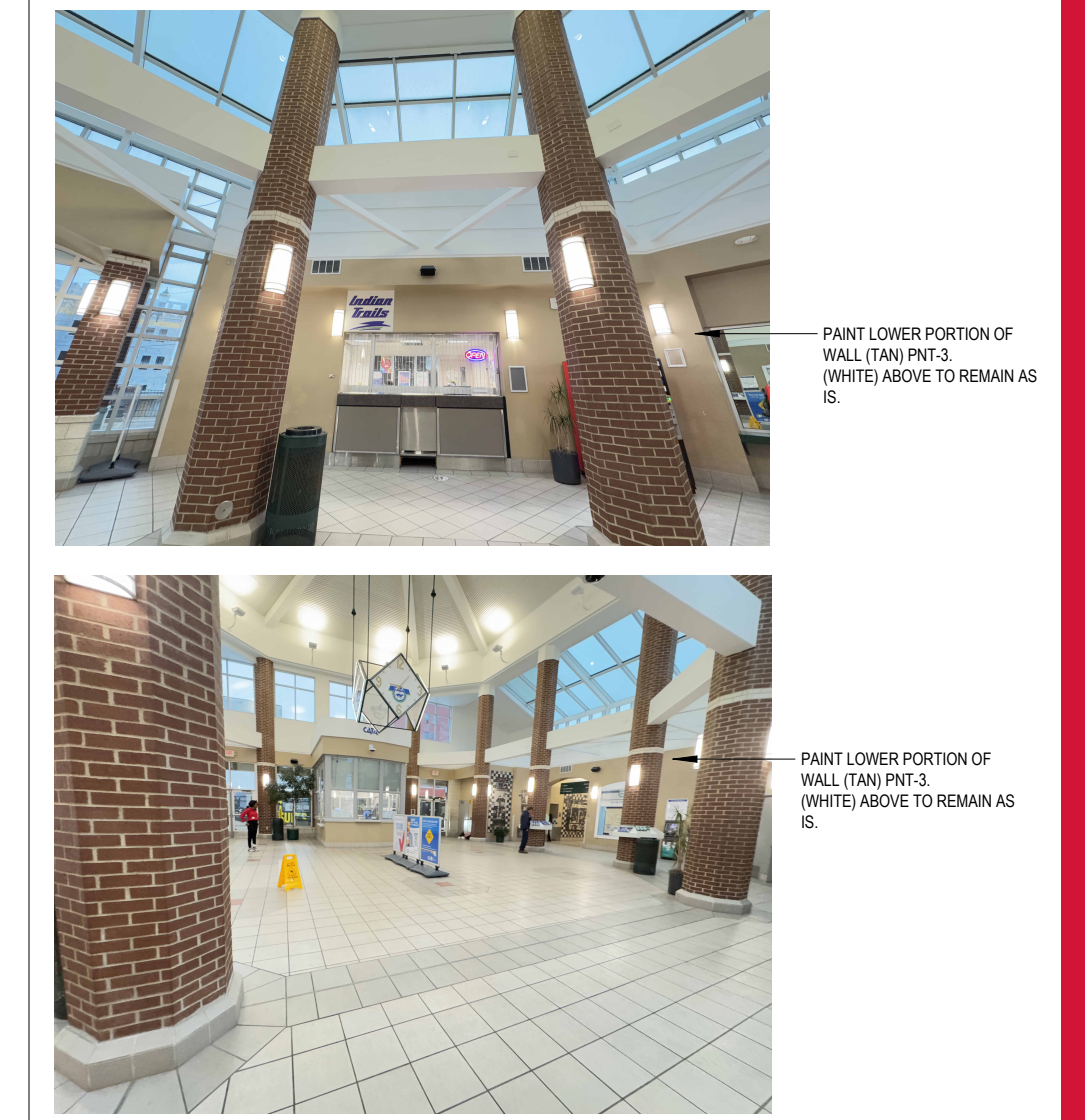
#### E7 EPOXY BASE DETAIL WINDOWS



#### E6 EPOXY BASE DETAIL COLUMNS



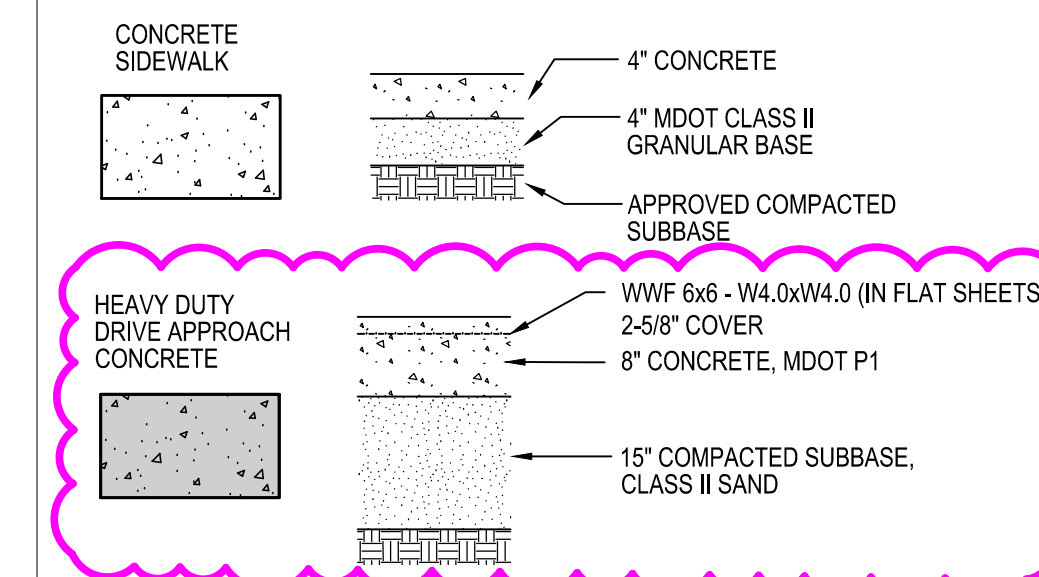
#### C1 LOBBY PAINT SCOPE





**CALL 811 NOTE:**  
 CONTRACTOR TO CONTACT 811 SERVICE AT LEAST 3 WORKING DAYS PRIOR TO CONSTRUCTION, TO CONFIRM LOCATION OF EXISTING UTILITIES. DIAL 811.

**PAVEMENT LEGEND**

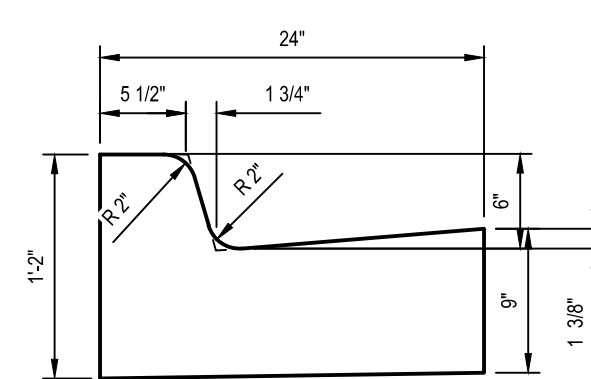
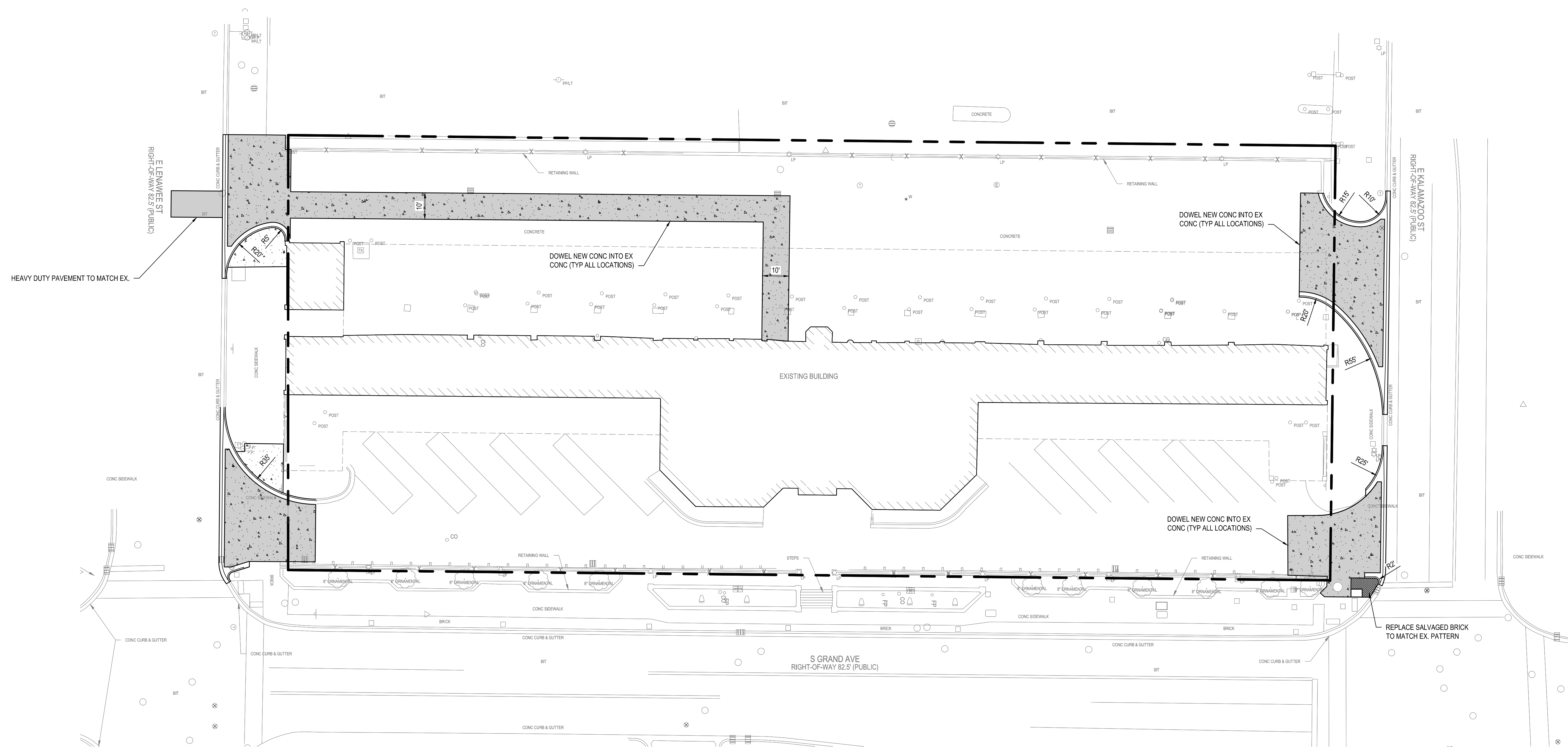


**GENERAL NOTES**

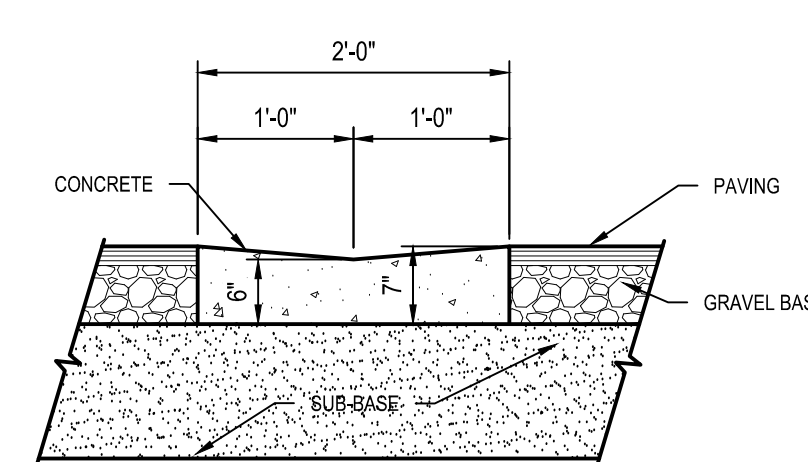
1. VERIFY THE HORIZONTAL AND VERTICAL LOCATION OF ALL EXISTING UTILITIES PRIOR TO CONSTRUCTION.
2. PROTECT AND MAINTAIN CROSSINGS OF OTHER UTILITIES.
3. REFER TO DRAWING C101 FOR BENCHMARK INFORMATION.
4. ALL MATERIAL, SPECIFICATIONS AND CONSTRUCTION METHODS SHALL BE IN CONFORMANCE WITH ALL APPLICABLE MUNICIPAL AGENCIES.
5. RESTORE ALL STREET SURFACES, DRIVEWAYS, CULVERTS, ROADSIDE DRAINAGE DITCHES, AND OTHER PUBLIC OR PRIVATE STRUCTURES THAT ARE DISTURBED OR DAMAGED AS A RESULT OF CONSTRUCTION ACTIVITIES TO MATCH AT A MINIMUM EXISTING CONDITIONS.
6. CONTRACTOR'S MANNER AND METHOD OF INGRESS AND EGRESS WITH RESPECT TO THE PROJECT AREAS SHALL IN NO WAY PROHIBIT OR DISTURB NORMAL PEDESTRIAN OR VEHICULAR TRAFFIC IN THE VICINITY AND IS SUBJECT TO REGULATION AND WRITTEN APPROVAL OF APPROPRIATE GOVERNING AGENCIES.

**GENERAL SITE LAYOUT NOTES**

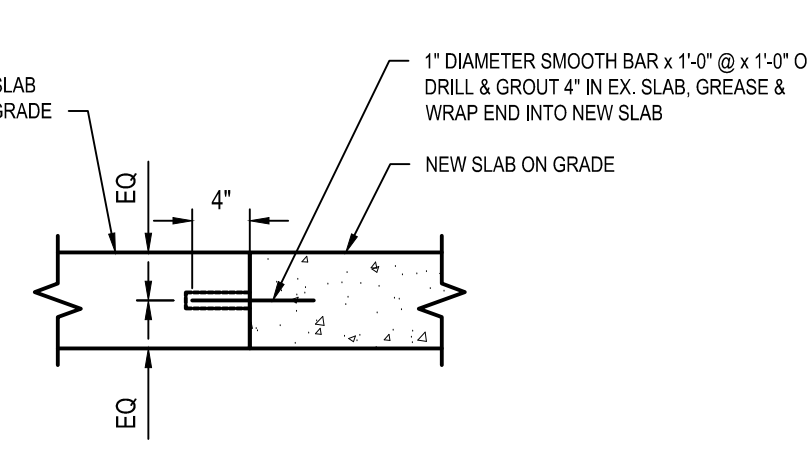
1. ALL WORKMANSHIP AND MATERIALS SHALL BE ACCORDING TO THE CURRENT MICHIGAN DEPARTMENT OF TRANSPORTATION (M.D.O.T) STANDARD SPECIFICATIONS FOR CONSTRUCTION.
2. CONTACT "MISS DIG" TOLL FREE AT 1-800-482-7171 THREE (3) DAYS PRIOR TO THE START OF CONSTRUCTION, EXCLUDING SATURDAYS, SUNDAYS, AND HOLIDAYS.
3. NO DIMENSION MAY BE SCALED. REFER UNCLEAR ITEMS TO THE ENGINEER FOR INTERPRETATION.
4. DIMENSIONS SHOWN ARE TO FACE OF CURB UNLESS OTHERWISE NOTED AS B-B (BACK TO BACK) OR E-E (EDGE OF METAL TO EDGE OF METAL).
5. CONTRACTOR TO PAINT STRIPE ALL PARKING SPACES SHOWN. PAINT COLOR TO BE YELLOW.
6. UPON REQUEST, ELECTRONIC INFORMATION WILL BE PROVIDED FOR SITE LAYOUT PURPOSES. CONTRACTOR SHALL REQUEST ALL INFORMATION IN WRITING THROUGH PROGRESSIVE AE. LAYOUT OF ALL NEW CONSTRUCTION SHALL BE DONE BY A LICENSED SURVEYOR.
7. ALL CONCRETE JOINTS SHALL BE TOOLED PER SPECIFICATIONS.
8. CONTRACTOR MUST RESTORE AND REPAIR ANY EXISTING CONDITIONS DISTURBED BY CONSTRUCTION. THIS IS TO INCLUDE BURIED UTILITIES, LIGHTING, LANDSCAPING, SPRINKLING, ETC.
9. ANY AREA DISTURBED BY CONSTRUCTION TO BE RESTORED TO CONDITION EQUAL TO OR BETTER THAN BEFORE CONSTRUCTION BEGAN.
10. ALL PAVEMENT, CURB & GUTTER, SIDEWALK AND UTILITIES WITHIN PUBLIC RIGHT OF WAY SHALL MEET CITY OF LANSING STANDARDS.
11. CONTRACTOR TO PROTECT EXISTING IRRIGATION SYSTEM AS MUCH AS POSSIBLE. REPAIR DAMAGE TO EXISTING IRRIGATION SYSTEM AND RECONFIGURE SPRINKLER LAYOUT TO ACCOMMODATE THE NEW IMPROVEMENTS.



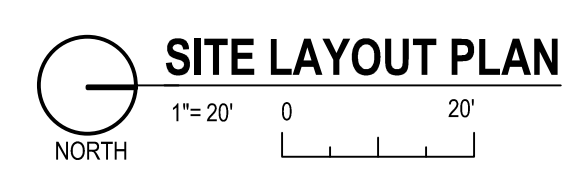
**E6 MDOT TYPE F4-MODIFIED CONCRETE CURB AND GUTTER DETAIL**  
 NOT TO SCALE



**E5 TYPICAL GUTTER PAN DETAIL**  
 NOT TO SCALE



**E4 CONCRETE DOWEL DETAIL**  
 NOT TO SCALE



If this document is sealed and signed in a digital or electronic format and is received from someone other than the sealing professional identified in the document, you must contact the sealing professional in writing to verify the authenticity of the document. The sealing professional declares the seal and signature are valid and he/she has no knowledge of any digital or electronic seal or signature that has not been validated in this manner.

**ISSUANCE**  
 02/18/2025 DESIGN DEVELOPMENT  
 04/02/2025 OWNER REVIEW  
 04/17/2025 BID  
 05/09/2025 ADDENDUM 02

**PROJECT NUMBER**  
 75500026  
**PROJECT MANAGER**  
 B. SIMON  
**DRAWN BY**  
 B. SIMON  
**CHECKED BY**

5/15/2025 3:34:00 PM B. Simon  
 P:\25000000\75500026\DWG\C201 - SITE LAYOUT PLAN.dwg Simon